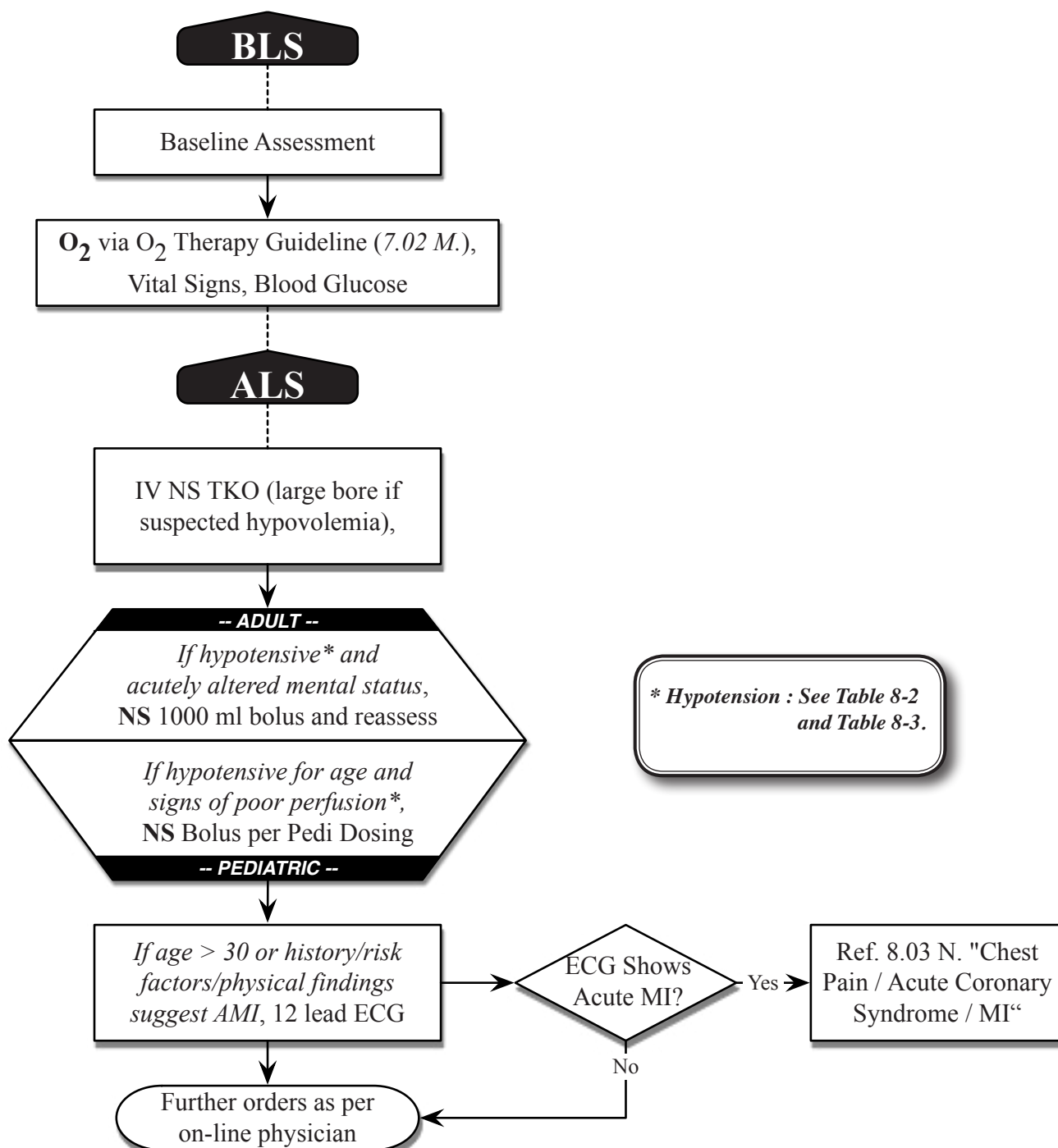


8.03 B. Abdominal Pain / Acute Abdomen



** Hypotension : See Table 8-2
and Table 8-3.*

Baseline Assessment Considerations

- *Rule-out trauma.*
- *Past history/illnesses.*
- *Consider pregnancy (ectopic/intrauterine) in women of child bearing age.*
- *Elderly patients may have abdominal pain due to symptoms of a serious disease such as ischemic bowel or aortic dissection/rupture.*
- *Inferior wall MI's frequently present with abdominal pain (especially elderly or female patients).*
- *Abdominal Aortic Aneurysm, history of aneurysm or GI Bleed.*

Life threatening causes of abdominal pain most often require surgical intervention and should be treated in the field by rapid assessment and transport to the most appropriate facility.