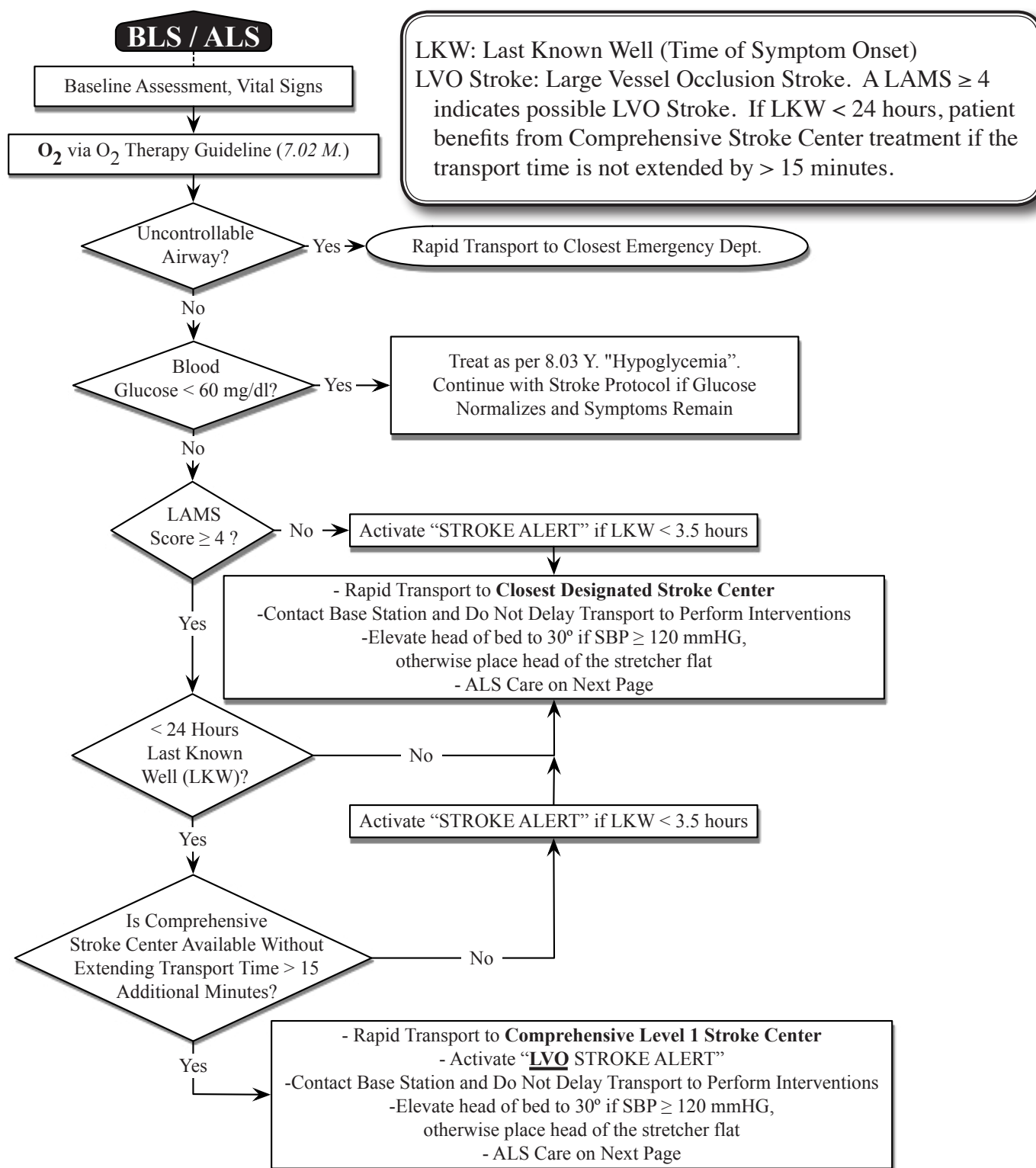


8.03 FF. Stroke (Acute) - ADULT ONLY



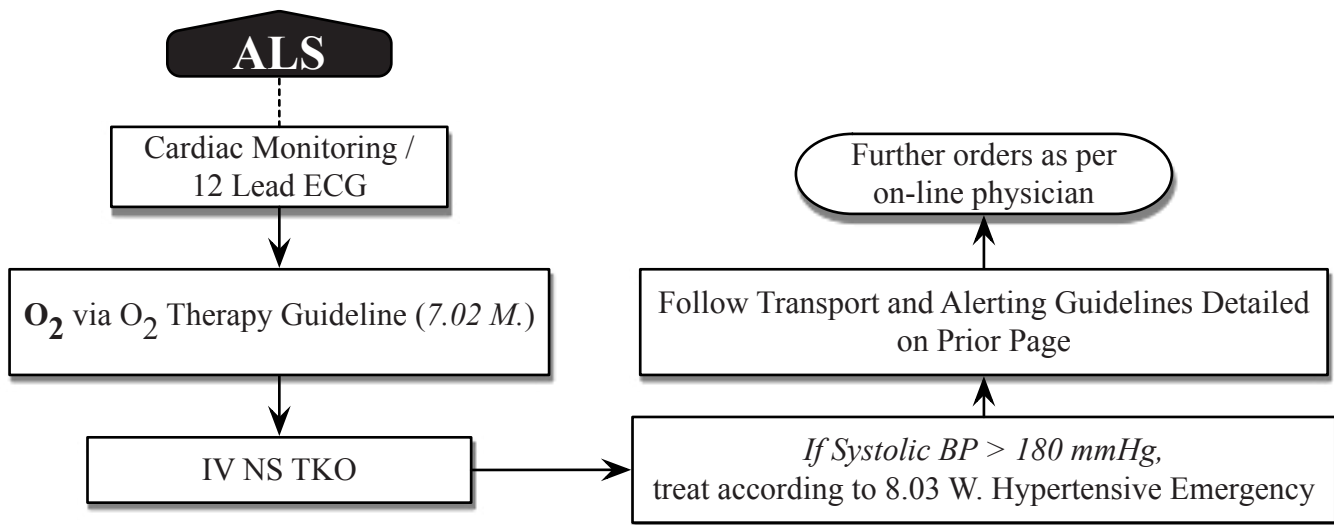
LKW: Last Known Well (Time of Symptom Onset)
 LVO Stroke: Large Vessel Occlusion Stroke. A LAMS ≥ 4 indicates possible LVO Stroke. If LKW < 24 hours, patient benefits from Comprehensive Stroke Center treatment if the transport time is not extended by > 15 minutes.

The Los Angeles Motor Scale (LAMS)

<i>Facial Droop</i>	<i>Arm Drift</i>	<i>Grip Strength</i>
Absent = 0	Absent = 0	Normal = 0
Present = 1	Drifts Down = 1	Weak Grip = 1
	Falls Rapidly = 2	No Grip = 2

The LAMS score will be between 0 and 5. Add up the points for each of the three sections to determine the score.

8.03 FF. Stroke (Acute) - ADULT ONLY - Continued



1. Important Signs / Symptoms to Document

- Sudden, unilateral facial drooping / weakness
- Sudden, unilateral arm weakness
- Sudden, unilateral decreased grip strength
- Sudden, difficult speech / aphasia

Important History to Document

- Time last known well
- Any sign of seizure activity
- Any trauma before onset of symptoms
- Any recent illness, surgery or trauma
- List of all current meds, especially anticoagulants

- 2. Family members should accompany the stroke patient in the transport apparatus in order to verify the time of symptom onset and to provide consent for interventional therapy. If this is not possible, obtain a phone number for the next of kin for these purposes.***