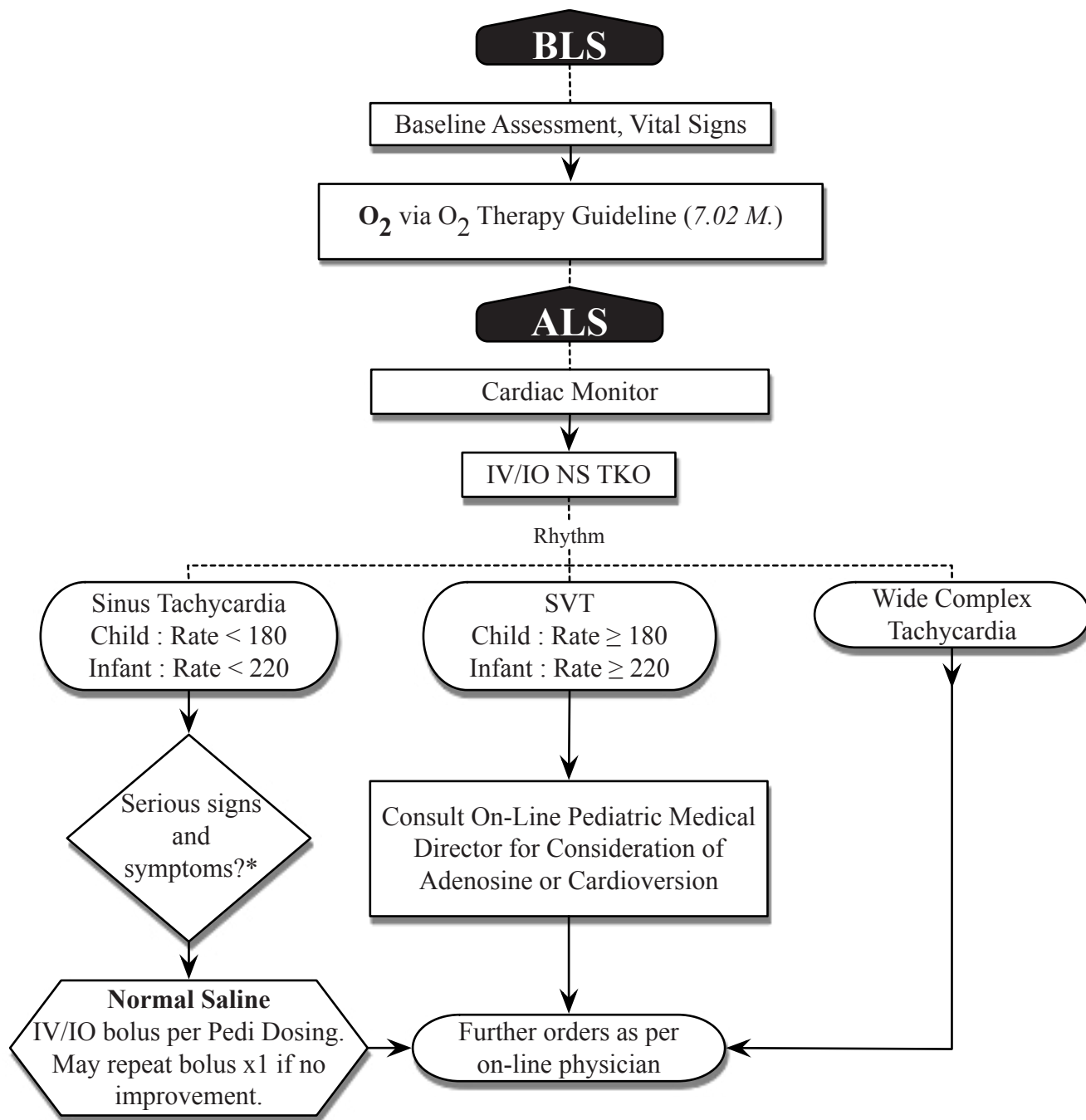


### 8.03 JJ. Tachycardia (Symptomatic) - PEDIATRIC ONLY



\* *Serious Signs / Symptoms include:*

- Unresponsiveness
- Hypotension
- Poor perfusion (capillary refill > 3 sec.)
- Respiratory Distress

*Therapies ONLY upon approval by MD On-Call*

*Adenosine - Rapid IVP per Pedi Dosing within 1-3 sec, followed by rapid flush of 10cc Normal Saline. Second Dose of Adenosine is doubled in the Pedi Dosing Guidelines.*

*Sync Cardioversion as per Pedi Dosing Guidelines and directed by MD On-Call.*