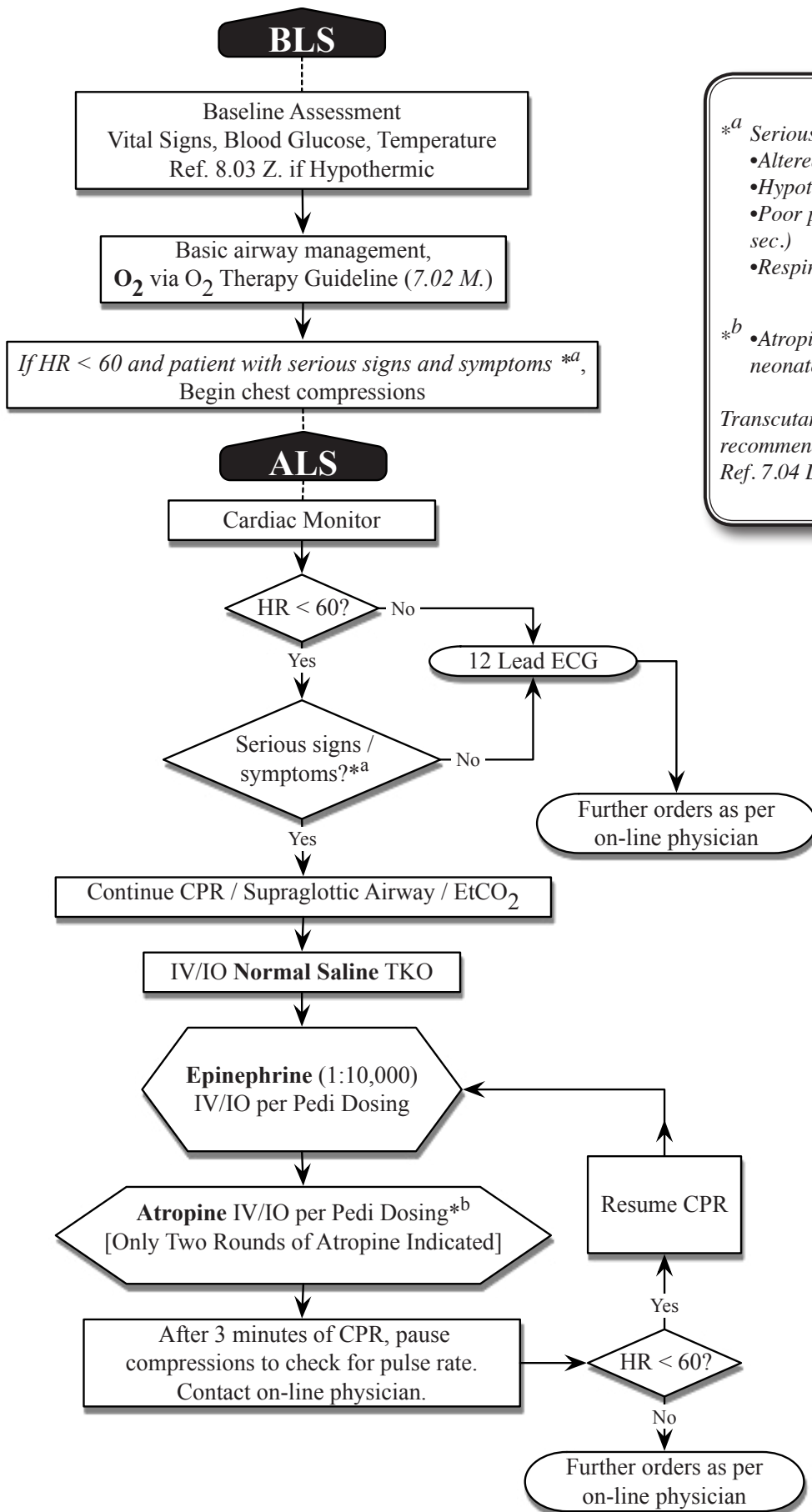


8.03 I. Bradycardia (Symptomatic) - PEDIATRIC ONLY



**^a Serious Signs / Symptoms include:*

- Altered Mental Status
- Hypotension
- Poor perfusion (capillary refill > 3 sec.)
- Respiratory Distress

**^b Atropine is not to be given to neonates without a physician order.*

Transcutaneous pacing may be recommended by on-line medical control, Ref. 7.04 D.